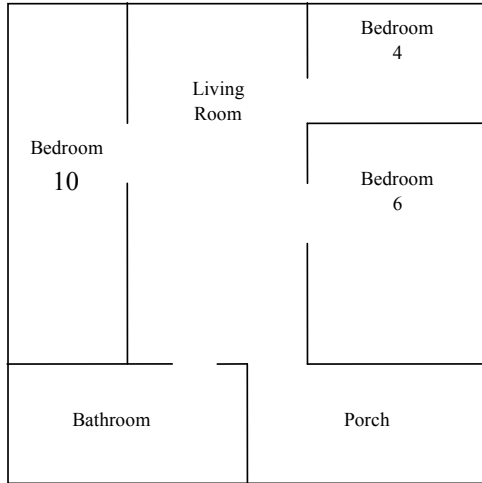


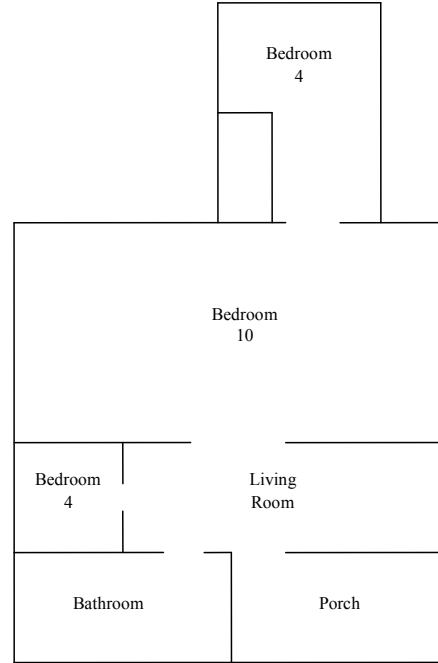
YMCA Camp Bernie CABINS & LODGES

Your group will be assigned cabin(s) by Camp Bernie based on your needs and the needs of the other groups on camp. This information can be used to plan sleeping arrangements in your assigned cabins.

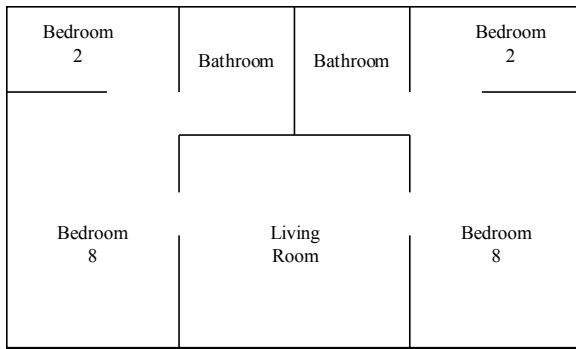
Birch Cabin (formerly Cabin 1)
Sleeping Capacity: 20



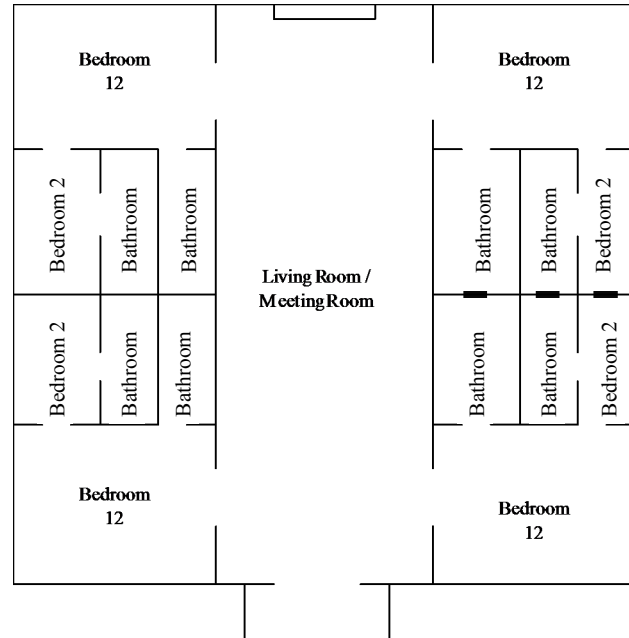
Maple Cabin (formerly Cabin 2)
Sleeping Capacity: 18



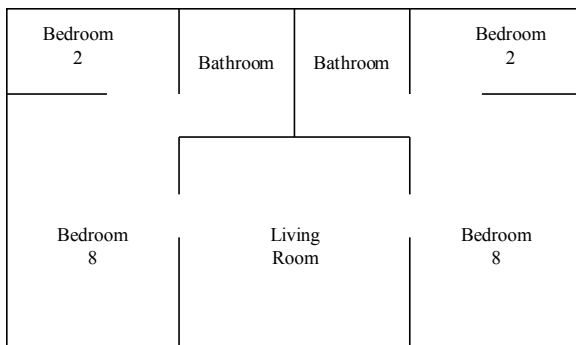
Hickory Cabin (formerly Cabin 5 & 6)
Sleeping Capacity: 20



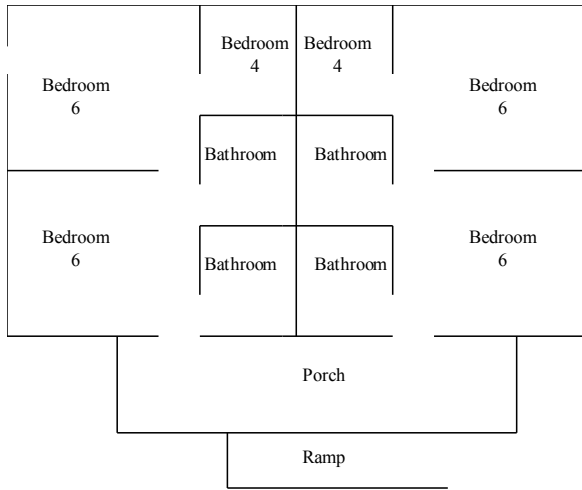
Jaqua Lodge
Sleeping Capacity: 56



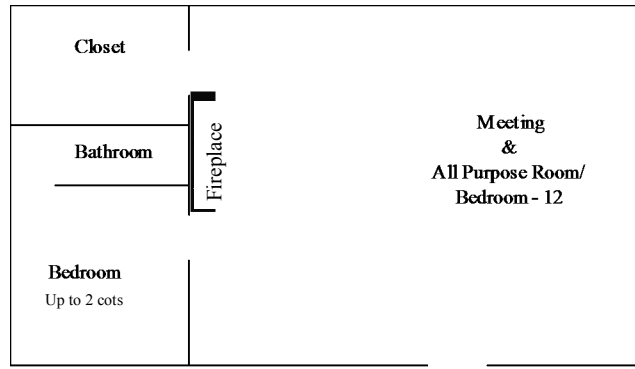
Oak Cabin (formerly Cabin 7 & 8)
Sleeping Capacity: 20



Lenape Lodge Upstairs
Sleeping Capacity: 32

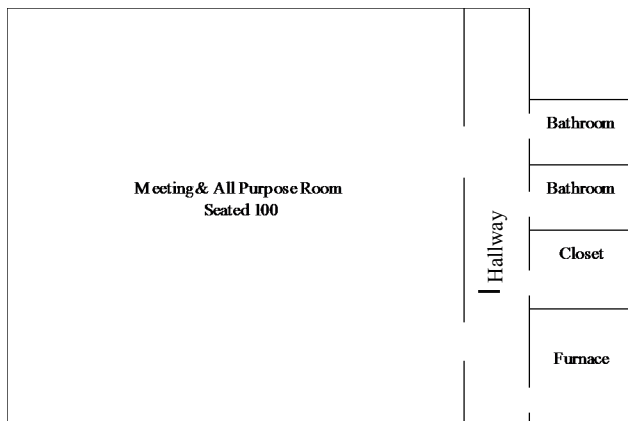
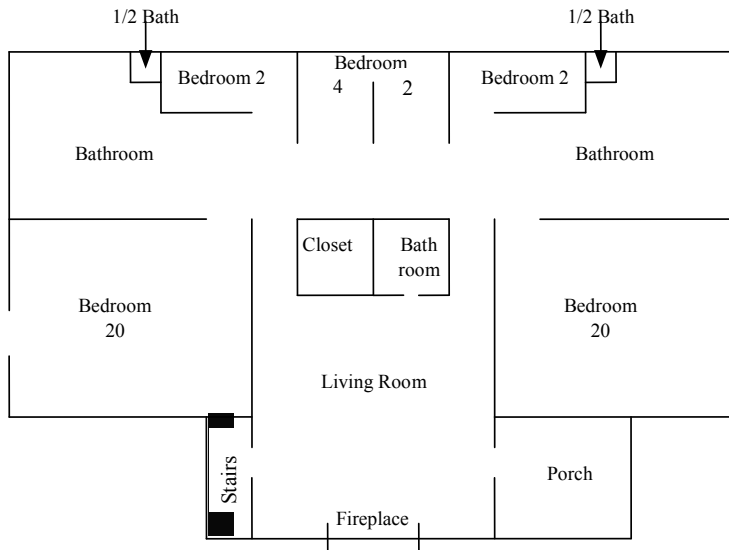


Lenape Lodge Downstairs
Sleeping Capacity: up to 14 cots



***Basement accessible from outside only**

Turrell Lodge Upstairs
Sleeping Capacity: 50
Max. Seating Capacity in Living Room: 20



Turrell Lodge Downstairs
Max. Seating Capacity 100
Sleeping Capacity: up to 15 cots